

HLT33021 Certificate III in Allied Health Assistance



Program Overview

unepartnerships

Important disclaimer

The material contained in this course is for general information only and is not intended as advice on any of the matters discussed herein. No person or persons should act or fail to act on the basis of any material contained herein. Students and others should consult professional advisers about any matter affecting them. UNE Partnerships, its officers and employees, expressly disclaim all and any liability to any persons whatsoever in respect of anything done or omitted to be done by such persons relying, or to any persons for the effect of acts of others relying, on any of the information contained herein.

This course contains material on a wide range of subjects written by a number of authors. In bringing this information to students these authors provide interpretation and opinion on such material. These interpretations and opinions are not necessarily those of UNE Partnerships or other body teaching the course, nor is any interpretation or opinion necessarily in accord with any policy of UNE Partnerships.

The publisher is not engaged in rendering legal, accounting, professional or other advice services. The publishers and the authors, consultants and editors, expressly, disclaim all and any liability and responsibility to any person, whether a purchaser or reader of this publication or not, in respect of anything, and of the consequences of anything, done or omitted to be done by any such person in reliance, whether wholly or partially, upon the whole or any part of the contents of the publication. Without limiting the generality of the above no author, consultant or editor shall have any responsibility for any act or omission of any other author, consultant or editor.

© UNE Partnerships Pty Ltd.

This work is copyright. No part may be reproduced by any process without written permission from UNE Partnerships Pty Ltd.

Images sourced external to UNE Partnerships are available for commercial use and licence conditions have been documented and complied with.

HLT33021 Certificate III in Allied Health Assistance - Version EVET1.0

Published: Wednesday, 13 December 2023

Program Overview developed by UNE Partnerships

UNE Partnerships Pty Ltd.

The Education & Training Company of the University of New England

PO Box U199, University of New England NSW 2351

Telephone: (02) 6773 0000

ABN 74 003 099 125

Contents

Overview 4

 Welcome..... 4

 Contact points..... 4

 Administration 4

 Learning and Assessment 4

 Customer protection officer 4

[Click to enter qualification code and name]..... 5

 Aim of the program 5

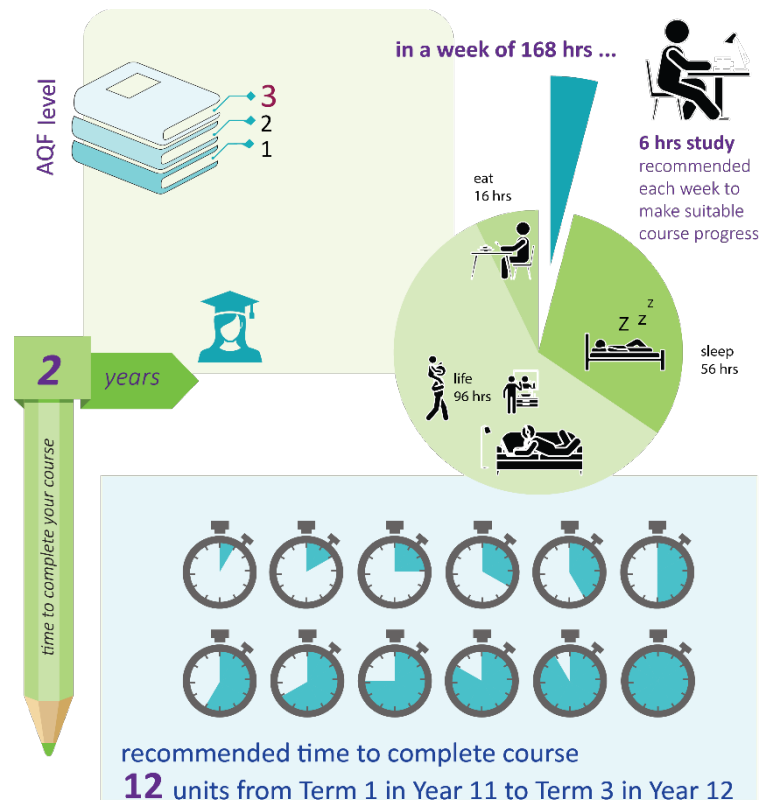
 Learning outcomes 5

 Structure of the program..... 5

 Accreditation and recognition 8

 Study workload 8

 Third party arrangements..... 8



Overview

Welcome

Welcome to the *HLT33021 Certificate III in Allied Health Assistance*. This is a nationally recognised and accredited program presented by UNE Partnerships Pty Ltd, the Education and Training Company of the University of New England.

We are delighted that you have joined the *AHA* program. This program is designed to provide graduates with the skills and knowledge required to provide allied health assistance to and under the supervision of an allied health practitioner.

Contact points

As experienced distance education providers, we understand how important communication is. We have used our online site to take advantage of current technology and make sure that information and contact points are up to date and go to the right people, while also giving you the opportunity to use the forms of contact that suit you.

Administration

If you have any questions of an administrative nature, please contact the student support team via the online site, or alternatively through:

Telephone: 02 6773 0000

Email: health@unep.edu.au

Mail: UNE Partnerships Pty Ltd
PO Box U199
University of New England NSW 2351

Learning and Assessment

If you would like to discuss program content or assessment requirements, please contact your allocated assessor. You can message them on the online site.

Customer protection officer

The customer protection officer is responsible for handling any complaints, grievances and appeals to ensure compliance with consumer protection legislation and contractual obligations. The Director of Education is the designated customer protection officer. Contact details are below.

Meg Michell Director of Quality Assurance

Telephone: 02 6773 0000

Email: meg.michell@unep.edu.au

HLT33021 Certificate III in Allied Health Assistance

Aim of the program

This qualification reflects the role of allied health assistants who support allied health professionals under predetermined guidelines. Depending on the setting, work may include following treatment plans for therapeutic interventions and/or conducting programs under the regular direct, indirect or remote supervision of an allied health professional.

Graduates can work in entry level positions across a range of health care settings such as, Patient Care Assistant, Nursing Assistant (including in aged care and disability support), and Physiotherapy Assistant.

To achieve this qualification, candidates must complete at least 120 hours of work as detailed in the Assessment Requirements for HLTAHA027 Assist with an allied health program.

Learning outcomes

On completion of the program you should be able to:

- Communicate and work in a health or community services setting
- Assist with an allied health program
- Work with a range of diverse clients
- Recognise healthy body systems
- Implement infection prevention and control procedures
- Interpret and apply medical terminology.

Structure of the program

There are 12 units of competency in this qualification and all must be successfully completed in order to achieve the *HLT33021 Certificate III in Allied Health Assistance*.

The program employs a mixed delivery mode, incorporating facilitator-led workshops, placement requirements, as well as a combination of print and electronic course material. An outline of the structure for delivery and assessment is provided below:

- Face-to-face: Weekly half-day workshops at a venue determined by your school
- Online learning: minimum of 3.5 hours per week outside of school hours
- Coaching sessions: 12 x 20 minute coaching sessions (via Zoom)
- Work placement: 120 hours to be undertaken by end of Term 2, in Year 12.

Details of the units of competency in which you are enrolled are available by clicking the links below.

Table 1: Program structure

Unit Number	Assessment Tasks	Unit of competency	Week
1	Task 1 Knowledge quiz Task 2 Short answer and research Task 3 Responding to infection risks Task 4 Infection prevention and control Task 5 Document and report	HLTINF006 Apply basic principles of infection prevention and control	Year 11 Term 1 - Week 2
2	Task 1 Knowledge quiz Task 2 Identify hazards and assess risks Task 3 Follow safe work practices Task 4 Follow evacuation procedure Task 5 Maintain safety and wellbeing	HLTWHS001 Participate in workplace health and safety	Term 1 - Week 5
3	Task 1 Knowledge quiz Task 2 Short answer questions Task 3 Assist with a group therapy session Task 4 Workplace supervisor report	HLTAHA027 Assist with an allied health program	Term 2 - Week 2
4	Task 1 Knowledge quiz Task 2 Wheelchair use procedures Task 3 Assist a person to move using a walking stick Task 4 Assist with falls Task 5 Assist with a move involving a wheelchair	CHCCCS002 Assist with movement	Term 2 - Week 6
5	Task 1 Knowledge quiz Task 2 Responding to tasks involving medical terminology Task 3 Using oral communication involving medical terminology Task 4 Workplace supervisor observation report	BSBMED301 Interpret and apply medical terminology appropriately	Term 3 - Week 2
6	Task 1 Knowledge quiz Task 2 Short answer questions Task 3 Communication and work tasks	CHCCOM005 Communicate and work in health or community services	Term 3 - Week 6
7	Task 1 Knowledge quiz 1 Task 2 Knowledge quiz 2 Task 3 Short answer questions Task 4 Support diabetic client Task 5 Support stroke victim Task 6 Conduct client activity group	HLTAAP001 Recognise healthy body systems	Term 4 - Week 3

Unit Number	Assessment Tasks	Unit of competency	Week
8	Task 1 Knowledge quiz 1 Task 2 Knowledge quiz 2 Task 3 Short answer questions Task 4 Workplace supervisor report	HLTAHA049 Recognise impact of health conditions	Term 4 - Week 8
9	Task 1 Knowledge quiz 1 Task 2 Knowledge quiz 2 Task 3 Self reflection Task 4 Respond to diverse social and cultural backgrounds	CHCDIV001 Work with diverse people	Year 12 Term 1 - Week 2
10	Task 1 Knowledge quiz Task 2 Short answer questions Task 3 Scenarios Task 4 Workplace supervisor report	CHCCCS020 Respond effectively to behaviours of concern	Term 1 - Week 6
11	Task 1 Knowledge quiz Task 2 Knowledge questions Task 3 Deliver a service to a client Task 4 Deliver a service in a multi-cultural environment Task 5 Deliver a service when facing challenging behaviours	CHCCCS010 Maintain a high standard of service	Term 2 - Week 2
12	Task 1 Knowledge quiz Task 2 Adult CPR Task 3 Infant CPR Task 4 Anaphylaxis Task 5 Asthma Task 6 Choking Task 7 Medical situations Task 8 Life-threatening bleeding	HLTAID011 Provide first aid	Full day workshop (2025 date to be confirmed)

Units of competency are achieved as assessment tasks are successfully completed, and all must be completed to be awarded the *HLT33021 Certificate III in Allied Health Assistance*. If you withdraw before you complete the required number of units of competency, you will receive a Statement of Attainment for those competencies you have successfully completed.

Information on how to submit your work for assessment is provided in the Assessment section of each Course online. Suggestions for managing your study and assessment tasks is also available in the additional support document '[Studying with UNE Partnerships](#)'. It is recommended you access and read that resource in addition to this Program Overview. Should you be unsure of what is required of you, contact your student support team.

Accreditation and recognition

The *HLT33015 Certificate III in Allied Health Assistance* in which you are enrolled is a nationally recognised and accredited program. It is listed on the national register of programs and is placed at Level 3 on the Australian Qualifications Framework (AQF).

The competencies gained through successfully completing this program are cross-industry and nationally recognised. You may exit from this qualification at any time with a Statement of Attainment for any units of competency successfully completed to that point.

Study workload

The *HLT33021 Certificate III in Allied Health Assistance* is delivered from Term 1 in Year 11 to Term 3 in Year 12 with weekly in-class, face-to-face workshops.

Third party arrangements

UNE Partnerships has not entered into any subcontracting arrangements for the delivery of training and assessment in this qualification.