

BSB40920 Certificate IV in Project Management Practice



Program Overview

unepartnerships

Important disclaimer

The material contained in this course is for general information only and is not intended as advice on any of the matters discussed herein. No person or persons should act or fail to act on the basis of any material contained herein. Students and others should consult professional advisers about any matter affecting them. UNE Partnerships, its officers and employees, expressly disclaim all and any liability to any persons whatsoever in respect of anything done or omitted to be done by such persons relying, or to any persons for the effect of acts of others relying, on any of the information contained herein.

This course contains material on a wide range of subjects written by a number of authors. In bringing this information to students these authors provide interpretation and opinion on such material. These interpretations and opinions are not necessarily those of UNE Partnerships or other body teaching the course, nor is any interpretation or opinion necessarily in accord with any policy of UNE Partnerships.

The publisher is not engaged in rendering legal, accounting, professional or other advice services. The publishers and the authors, consultants and editors, expressly, disclaim all and any liability and responsibility to any person, whether a purchaser or reader of this publication or not, in respect of anything, and of the consequences of anything, done or omitted to be done by any such person in reliance, whether wholly or partially, upon the whole or any part of the contents of the publication. Without limiting the generality of the above no author, consultant or editor shall have any responsibility for any act or omission of any other author, consultant or editor.

© UNE Partnerships Pty Ltd.

This work is copyright. No part may be reproduced by any process without written permission from UNE Partnerships Pty Ltd.

Images sourced external to UNE Partnerships are available for commercial use and licence conditions have been documented and complied with.

BSB40920 Certificate IV in Project Management Practice Version 1.0

Published: Tuesday, 22 March 2022

Program Overview developed by UNE Partnerships

UNE Partnerships Pty Ltd.

The Education & Training Company of the University of New England

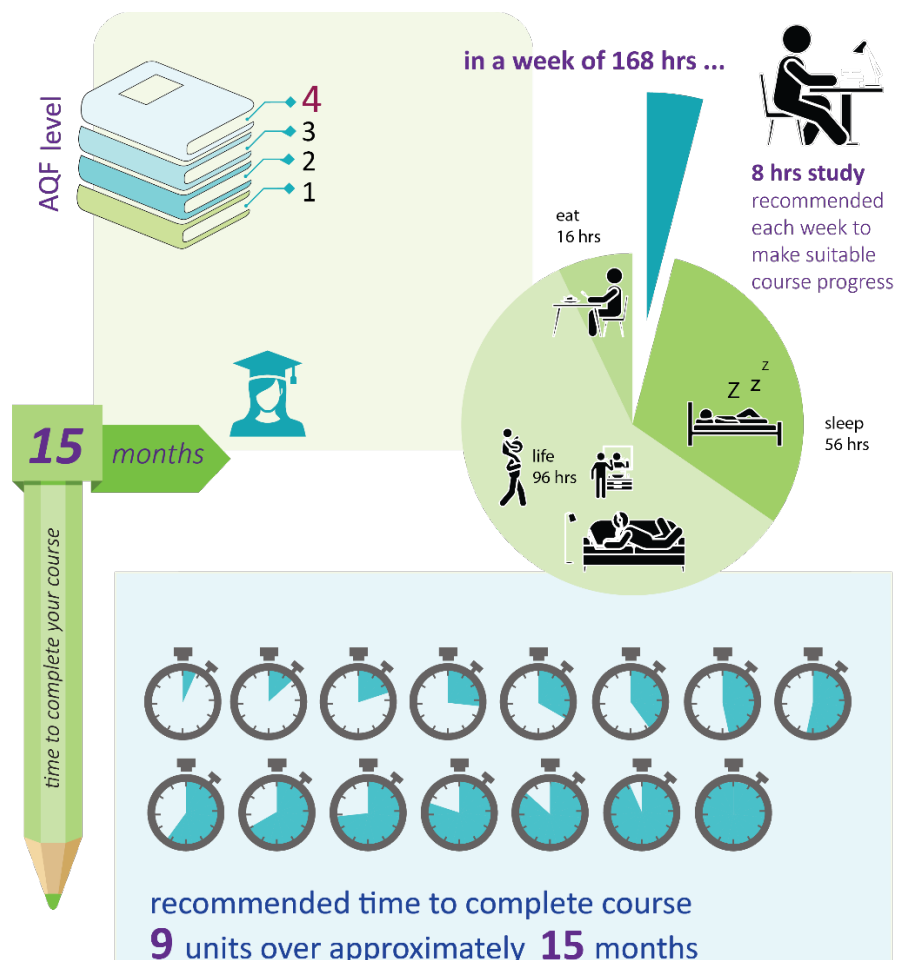
PO Box U199, University of New England NSW 2351

Telephone: (02) 6773 0000

ABN 74 003 099 125

Contents

- Overview 4
 - Welcome..... 4
 - Contact points 5
- BSB40920 Certificate IV in Project Management Practice 6
 - Aim of the program 6
 - Structure of the program 7
 - Accreditation and recognition..... 8
 - Study workload..... 8
 - Study period 8
 - Third party arrangements 8



Overview

Welcome

Welcome to the *BSB40920 Certificate IV in Project Management Practice*. This is a nationally recognised and accredited program presented by UNE Partnerships Pty Ltd, the Education and Training Company of the University of New England.

This program is founded on national and international best practice in project management, as endorsed by the Australian Institute of Project Management.

The design of this program allows you to study the most up-to-date theories and practices in the field of project management, and more importantly at the level of Project Coordinator where responsibility for many of the project outcomes and team membership is found. This has application to a number of roles including team leader, project administrator, project officer, scheduler, estimator, or team member.

It does not matter which industry you work in nor the size or complexity of the projects in which you expect to be involved, because the skills and knowledge gained through successful completion of this course are just as applicable wherever you are or however you intend to apply them.

Whatever your needs, at the end of this program you will find that your day-to-day activities will be much simpler and less time-consuming through a better understanding of the application of the principles and processes associated with the effective management of projects.

Throughout this program, our role is to act as your guide. No-one knows better than you do how you intend applying any new skills or knowledge within your work environment. Because of this our aim is to highlight the competencies demonstrated by the best project managers and to help you try these out in ways that are important to your needs.

You may already know, and be applying, many of these competencies. In this case our aim is also to help you gain professional recognition for what you already know and are doing. This way your current skills and knowledge can be recognised and aligned with those identified as being amongst the best here and overseas.

Contact points

As experienced distance education providers, we understand how important communication is. We have used our online site to take advantage of current technology and make sure that information and contact points are up to date and go to the right people, while also giving you the opportunity to use the forms of contact that suit you.

Administration

If you have any questions of an administrative nature, please contact the student support team via the online site, or alternatively through:

Telephone: 02 6773 0000

Email: project@unep.edu.au

Mail: UNE Partnerships Pty Ltd
PO Box U199
University of New England NSW 2351

Learning and Assessment

If you would like to discuss program content or assessment requirements, please contact your allocated assessor.

Customer protection officer

The customer protection officer is responsible for handling any complaints, grievances and appeals to ensure compliance with consumer protection legislation and contractual obligations. The Director of Education is the designated customer protection officer. Contact details are below.

Meg Michell Director of Education

Telephone: 02 6773 0000

Email: meg.michell@unep.edu.au

BSB40920 Certificate IV in Project Management Practice

Aim of the program

Today most managers practise project management in one form or another. Project teams are replacing middle managers as organisations 'down-size' or flatten their organisational hierarchy, and more and more work is being measured by outcomes that meet quality, time or cost guidelines.

This course reflects the role of individuals who identify and apply project management skills and knowledge in a wide variety of contexts. They may be members of a project team but with no direct responsibility for the overall project outcomes. They support project operations in one or more roles and under direction and may also use project tools and methodologies selectively to support organisational or business activities. They take responsibility for their own outputs in terms of organisational and project quality requirements and may have limited responsibility for the output of others. At the successful completion of this course you will have:

- a working knowledge of project management, including an understanding of project planning and control procedures, resource management, and risk analysis as they apply to projects, and
- an understanding of the methods, techniques and tools available to help you manage more effectively the elements of the projects you are, or will be, involved in.

Learning outcomes

On completion of the program you should be able to contribute to:

- Developing effective project management plans to meet the delivery requirements and expectations of project customers and stakeholders.
- Using governance, risk and communications mechanisms linked with plans for the day-to-day monitoring and effective control of projects to meet objectives, and the ultimate realisation of benefits.
- Providing quality deliverables, with the ability to meet reporting requirements on demand, and ultimately provide customer satisfaction.
- Selecting appropriate tools and techniques to support monitoring and control mechanisms, and continuous improvement.
- Assigning, developing and leading project teams to achieve optimal performance and outstanding, sustainable results.

Structure of the program

There are nine (9) units of competency in this qualification and all must be successfully completed in order to achieve the *BSB40920 Certificate IV in Project Management Practice*. If you enrol in a Skill Set, or selected units from the qualification, successful completion of your study would lead to the issuing of a Statement of Attainment for those units completed.

The program is offered through online study, and an outline of the structure for delivery and assessment is provided below. Details of the units of competency in which you are enrolled are also available online, at Training.gov.au or by clicking the table links provided.

Before you begin read the **Introductory Reading – Managing Projects** (*located under Accessibility and Print section of Scope course*)

Table 1: Overview or course structure

Course name	Unit/s of competency
Apply project scope management techniques	BSBPMG420- Apply project scope management techniques
Apply project time management techniques	BSBPMG421- Apply project time management techniques
Apply project cost management techniques	BSBPMG423- Apply project cost management techniques
Apply project quality management techniques	BSBPMG422- Apply project quality management techniques
Apply project risk management techniques	BSBPMG426- Apply project risk management techniques
Apply project information management and communications techniques	BSBPMG425- Apply project information management and communications techniques
Apply project human resources management approaches	BSBPMG424- Apply project human resources management approaches
Apply project procurement procedures	BSBPMG427- Apply project procurement procedures
Apply project life cycle management processes	BSBPMG428- Apply project life cycle management processes

Units of competency are achieved as assessment tasks are successfully completed, and all must be completed to be awarded the *BSB40920 Certificate IV in Project Management Practice*. If you withdraw before you complete the required number of units of competency, you will receive a Statement of Attainment for those competencies you have successfully completed.

Full details for the assessment tasks and information on how to submit your work for grading is provided in the Assessment section of each Course online. Suggestions for managing your study and assessment tasks is also available in the additional support document '[Studying with UNE Partnerships](#)'. It is recommended you access and read that resource in addition to this Program Overview.

Should you be unsure of what is required of you, contact your student support team.

Accreditation and recognition

The *BSB40920 Certificate IV in Project Management Practice* in which you are enrolled is a nationally recognised and accredited program. It is listed on the national register of programs and is placed at level 4 on the Australian Qualifications Framework (AQF).

The competencies gained through successfully completing this program are cross-industry and nationally recognised. You may exit from this qualification at any time with a Statement of Attainment for any units of competency successfully completed to that point.

The Australian Institute of Project Management (AIPM) has endorsed and recognised this course as meeting its guidelines for professionalism in training and education. The AIPM recognises successful achievement of UNE Partnerships' *BSB40920 Certificate IV in Project Management Practice* as meeting the candidate assessment requirements for a Certified Practising Project Practitioner (CPPP). CPPP certification provides professional peer group recognition of people competent and skilled in world best practice project management.

Study workload

The nominal duration of your enrolment in the *BSB40920 Certificate IV in Project Management Practice* is 12-15 months. The time it takes you to achieve the competencies required will depend on the amount of relevant learning and experience you have as well as your current practices. Students with a moderate level of relevant learning and experience should be able to complete the program requirements in about 10 hours a week of self-directed workplace and individual study over the study period, as outlined in your study plan. Inexperienced students will likely require more time.

Study period

You have up to 15 months from enrolment to complete the *BSB40920 Certificate IV in Project Management Practice*. If you fall behind in your schedule, you should contact UNE Partnerships to discuss your progress. An extension to the study period may be available, however additional fees may apply.

Third party arrangements

UNE Partnerships has not entered into any subcontracting arrangements for the delivery of training and assessment in this qualification.